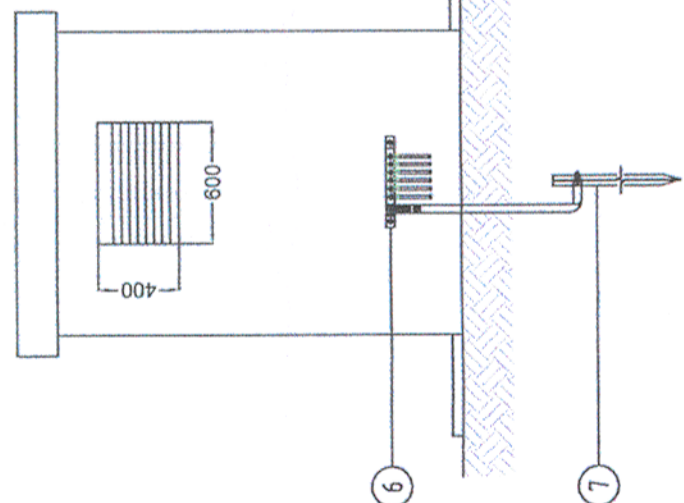
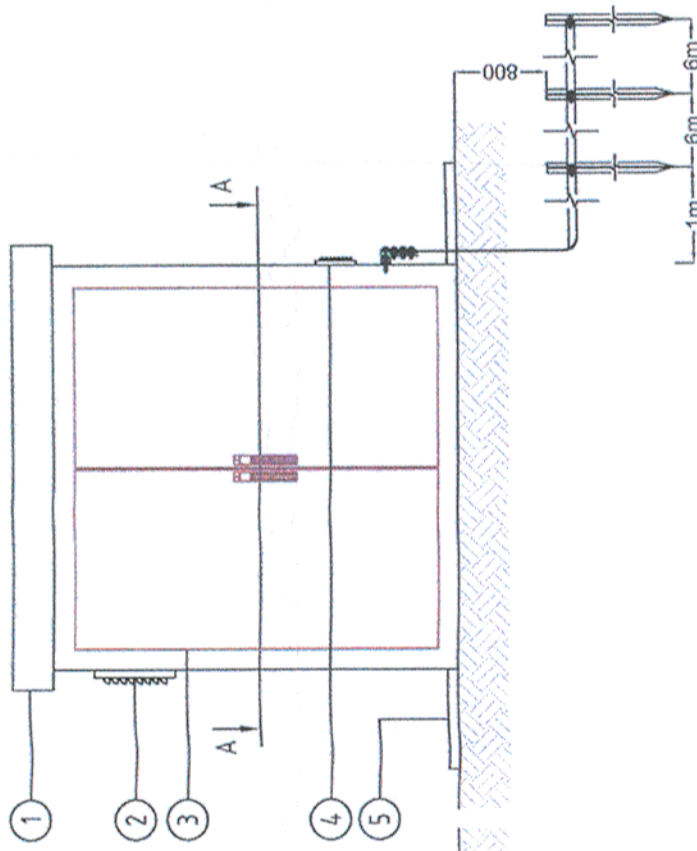


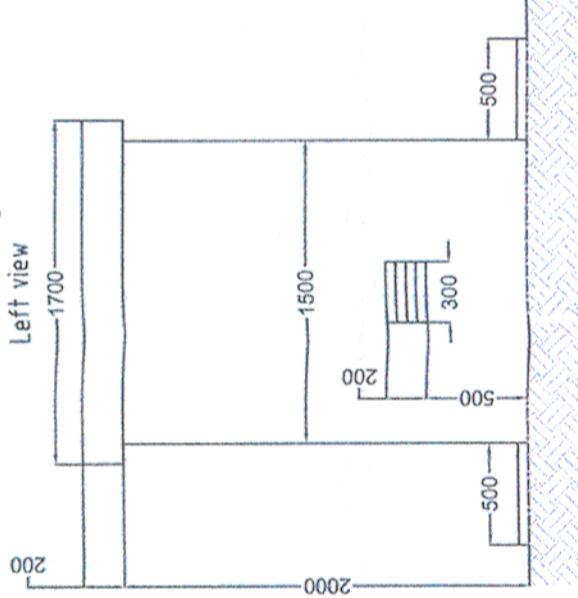
Vedere din dreapta  
Right view



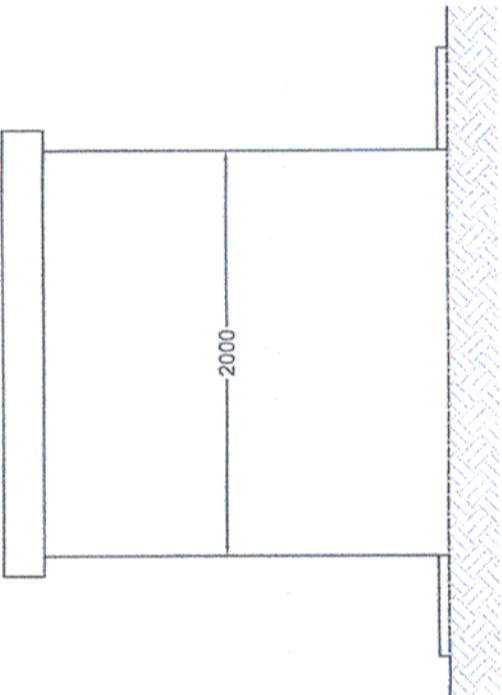
Vedere din fata  
Front view



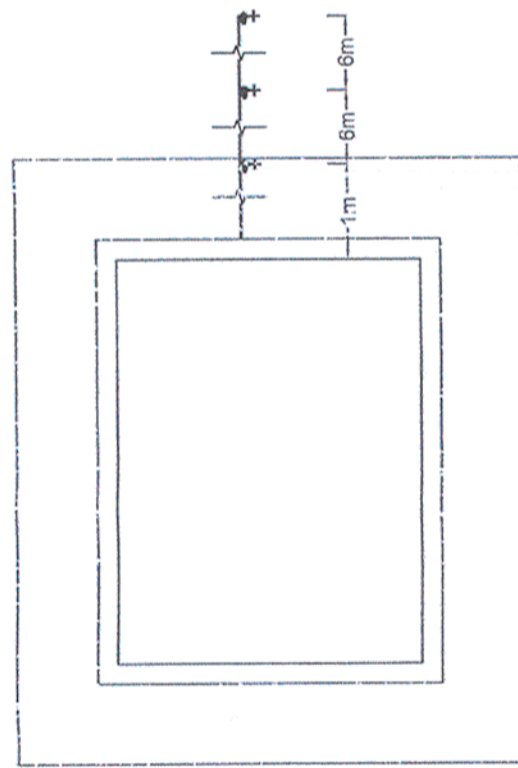
Vedere din stanga  
Left view



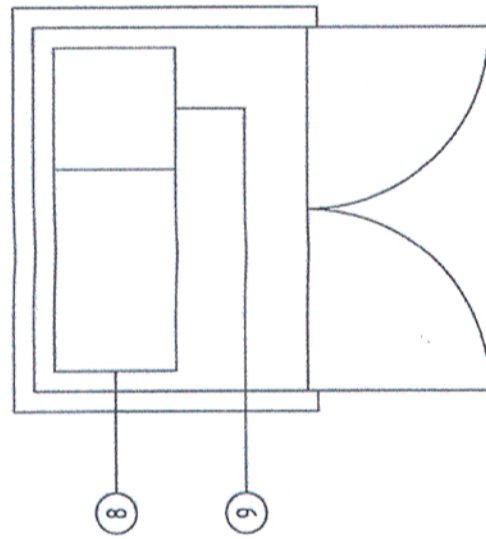
Vedere din spate  
Back view



Vedere de sus  
Top view



A - A



LEGENDA / LEGEND

- 1 Cabina de beton
- 2 Concretul cabin
- 3 Grilaj superior pentru ventilatie
- 4 Grilaj inferior pentru ventilatie
- 5 Usc metalica dubla
- 6 Dusa metalica dubla
- 7 Dusa de beton
- 8 Concretul panou
- 9 Legatura la priza de pamant

- 10 Echipa de proiectare
- 11 Echipa de executie
- 12 Echipa de verificare

NOTA / NOTE

-dimensiunile prezentate sunt cu caracter informativ, constructiile urmand sa stabileasca gabariturile cabinelor in functie de echipamentul utilizat

NOTA / NOTE

1. Cabina va fi prevazuta cu iluminat normal realizat cu lampa fluorescenta de 18W si iluminat de siguranta.  
The cabin will be foreseen with 18W regular light with fluorescent lamp and safety light.  
2. Tabloul cu echipamentele de telecomunicatii vor fi amplasate pe unul din peretii laterali ai cabinelor in functie de dimensiunile acestora.  
The telecommunication panel will be placed on one of the cabin lateral walls according to the dimensions.  
3. Pe usa frontala a panoului de comanda si semnalizare va fi prezentat schema monofilara impreuna cu cheile/butoanele de comanda locale si unitatile de afisare a misurimilor misurate.  
On the front door of the command and signalling panel will be shown the single line diagram with keys/buttons for local command and display units for measured values.

Verificator / Expert  
Checker / Expert



Cerinta  
Requirement



MINISTERUL  
TRANSPORTURILOR



BENEFICIAR / BENEFICIARY :  
COMPANIA NAȚIONALĂ DE CĂI FERATE "CFR" SA



PROIECTANT / DESIGNER:

Aprobat  
Approved

Sef de echipa  
Team leader

C. Teodorescu

Data  
Date

Semnatura  
Signature

Verificat  
Checked

Expert Cheie  
Key Expert

/ D. Stanescu

03.2013



Subcontractant / Subcontractor

Aprobat  
Approved

Adjunct Sef de echipa  
Deputy Team leader

A.M. Baicu

03.2013

Proiectat  
Designed

Inginer  
Engineer

M. Golea

03.2013

"Reabilitarea liniei c.f. Frontieră - Curtici - Simeria, parte componentă a coridorului IV Pan - European pentru circulația trenurilor cu viteză maximă de 160 km/h"

"Rehabilitation of the Railway Line Border - Curtici - Simeria, component Part of the IV Pan - European Corridor for the Trains Circulation with maximum speed of 160 km/h"

Sections 2 : km 614 - Gurasada

Project 9i  
35311.1

Faza / Phase:  
PTH+CS / TD+TS

Denumire desen / Drawing name:

PS ILTEU - Cabina de beton / Concrete cabine

Scara / Scale  
- / -

Revizia / Revision  
1/16.05.2013

Cod desen / Drawing Code  
PT.02.06.15.EA.005

Nr / No  
05 / 05